

Columbia County STIF plan definition and identification of low income households.

Columbia County defines low income households as follows:

1. “Areas of High Percentage of Low-Income Households” shall mean geographic areas within Columbia County that are determined to have a high percentage of low-income households. Pursuant to OAR 732-040-0035(2)(a), it shall be the responsibility of the Advisory Committee to gather data and to seek public input, and to make a determination as to the areas of Columbia County in which high percentages of low-income households exist, and to publish said determination in its Committee minutes and printed public materials.

Utilizing the guidance provided by ODOT, Columbia County has used the 2012-2016 US Census data methodology to determine the percentage of low-income households. Additionally Columbia County has utilized remix to verify low-income households along selected routes. Because the County’s project is to increase Dial a Ride service and because Dial a Ride serves all parts of the county the total number of Low Income households will be used.

Using the above Method the County has determined the following:

There are 16,396 Individuals below the 200% poverty Level:

	Columbia County, Oregon	
	Estimate	Margin of Error
Total:	49,103	+/-157
Under .50	3,439	+/-682
.50 to .99	3,159	+/-551
1.00 to 1.24	2,469	+/-529
1.25 to 1.49	2,460	+/-642
1.50 to 1.84	3,517	+/-587
1.85 to 1.99	1,352	+/-377
2.00 and over	32,707	+/-1,154

There are 2.6 persons per household on average in Columbia County:

	Columbia County, Oregon	
	Estimate	Margin of Error
Total:	2.60	+/-0.04
Owner occupied	2.65	+/-0.06
Renter occupied	2.46	+/-0.13

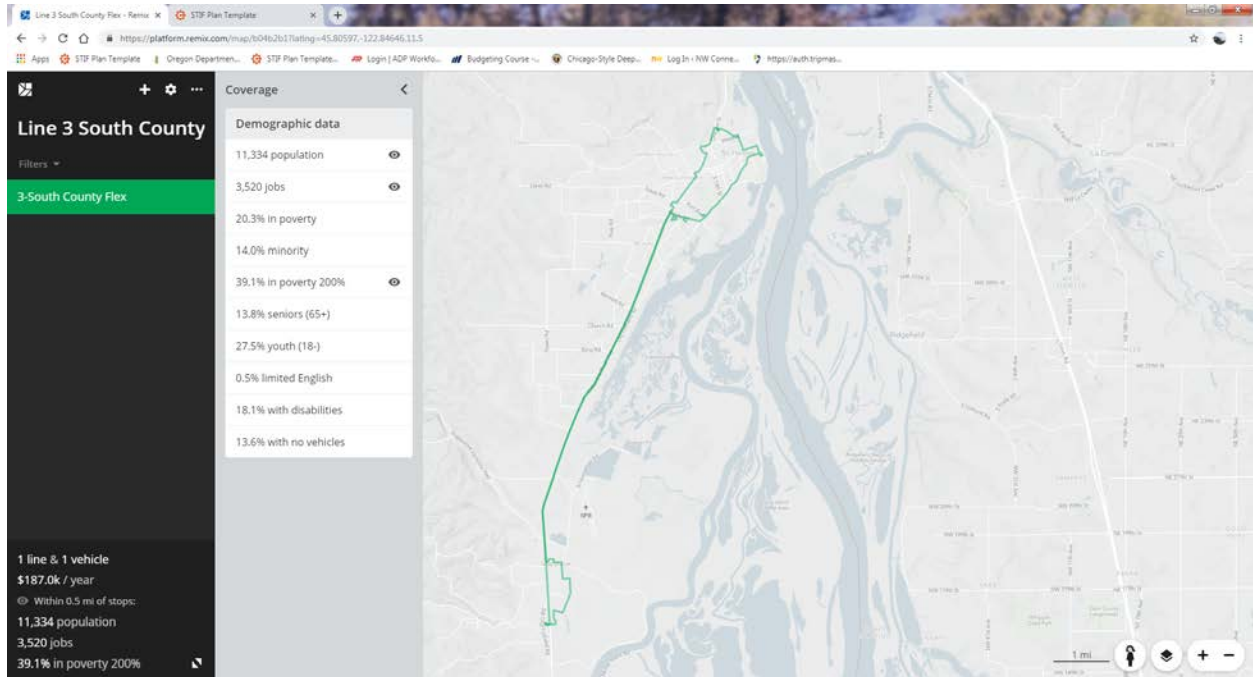
16,396 / 2.6 = There are approximately 6,306 Households below the 200% poverty level.

49,103 / 2.6 = There are approximately 18,886 Households in the County.

33.4% of the households in the County are below the 200% poverty level.

For the Line 3 deviated Fixed Route:

We utilized Remix along with the US census data for the low income household calculations as follows:



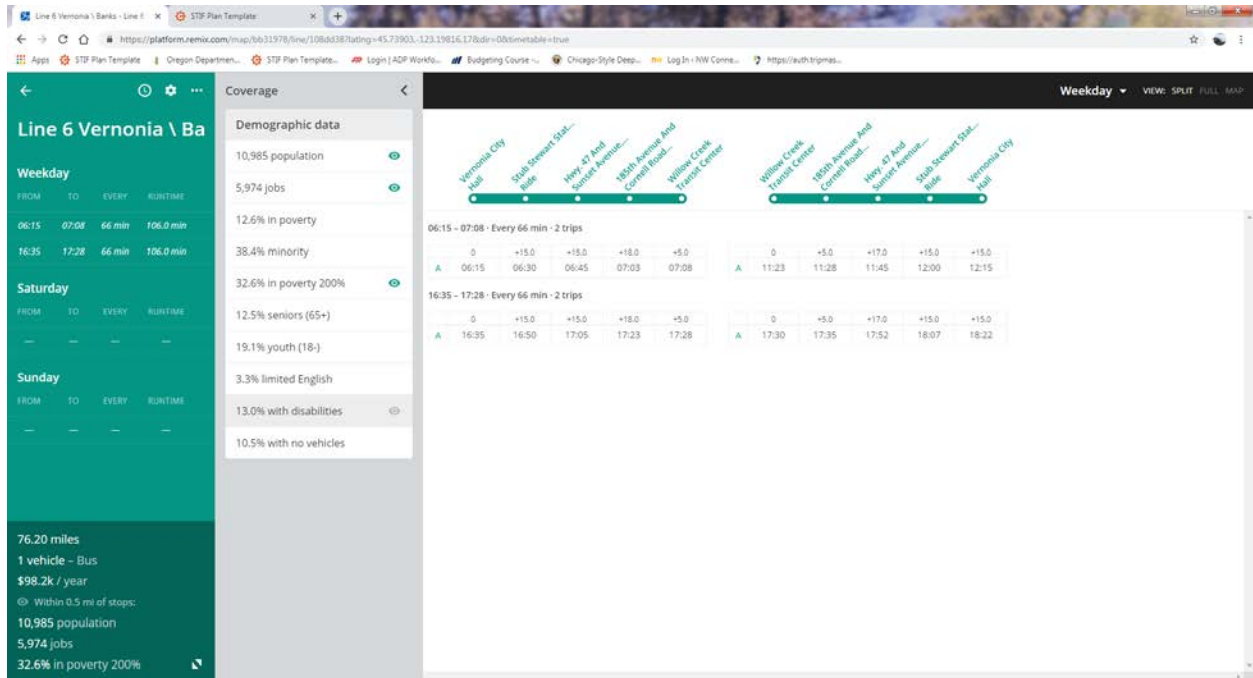
Population: 11,334 within ½ mile of a transit stop.

2.6 average per house per US Census = 4,359 Households within ½ of a transit stop.

39.1% in 200% Poverty = 1704 Households in 200% Poverty within ½ mile of a transit stop.

For the Line 6 Vernonia deviated Fixed Route:

We utilized Remix along with the US census data for the low income household calculations as follows:



Population: 10,985 within ½ mile of a transit stop.

2.6 average per house per US Census = 4,225 Households within ½ of a transit stop.

32.6% in 200% Poverty = 1373 Households in 200% Poverty within ½ mile of a transit stop.